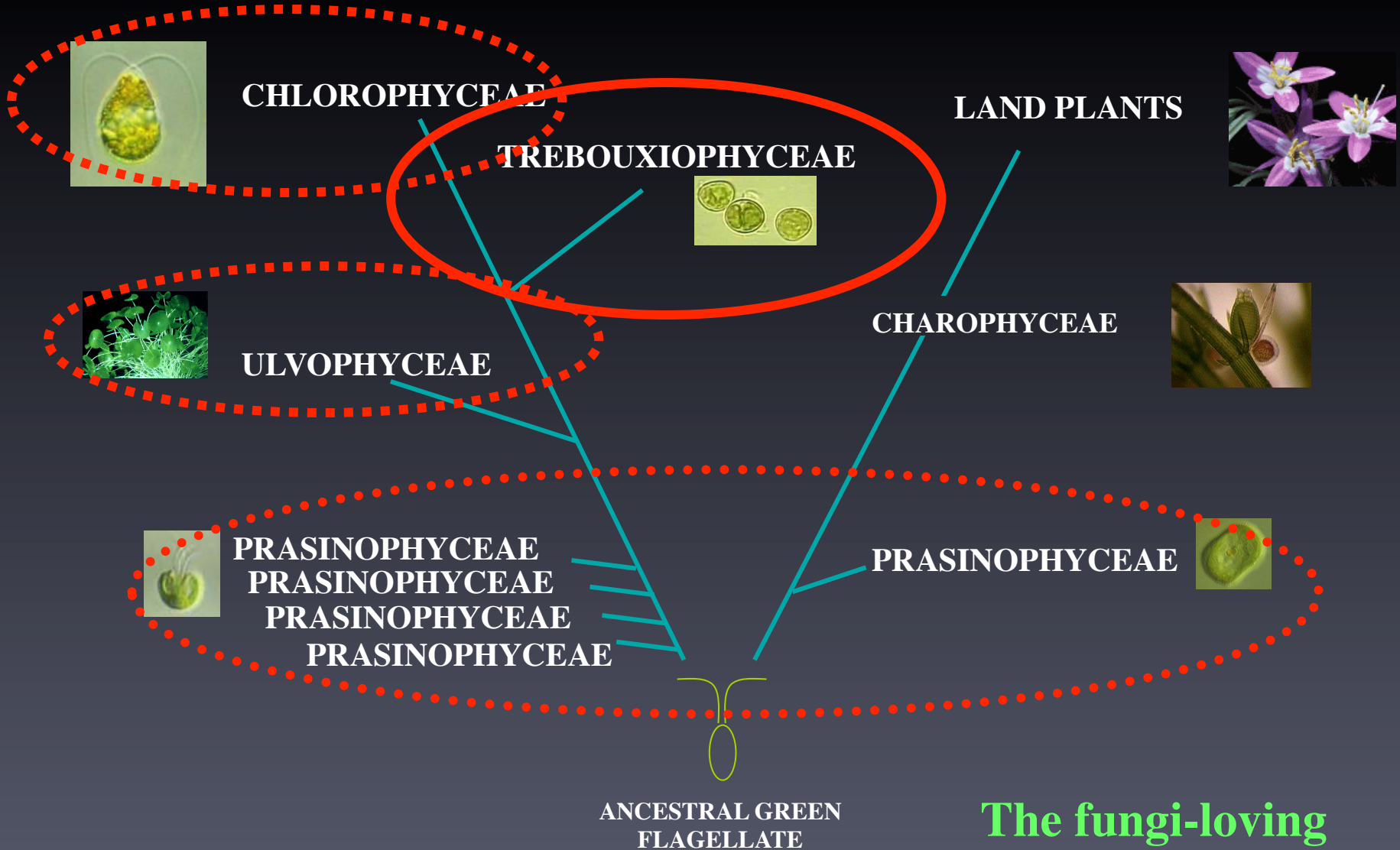


# TREBOUXIOPHYCEAE



**The fungi-loving green algae!**

*Essential Information:*

- Freshwater and terrestrial
- Many are phycobiont in lichenic associations with fungi
- Coccoid unicellular or colonial, filamentous & sarcinoid
- Closed mitosis with a **Phycoplast**
- **CCW**
- “Metacentric” mitotic spindle (basal bodies at the side not at the poles during mitosis)
- Zygotic meiosis with Hypnozygotes



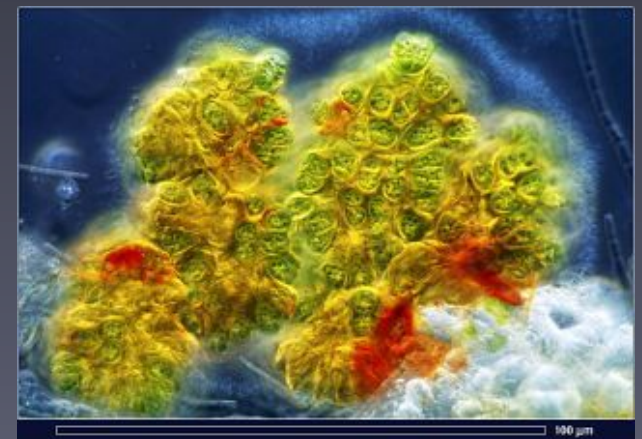
*Trebouxia*, a phycobiont

*Botryococcus*

Freshwater phytoplankton

Rich in lipids (flotation)

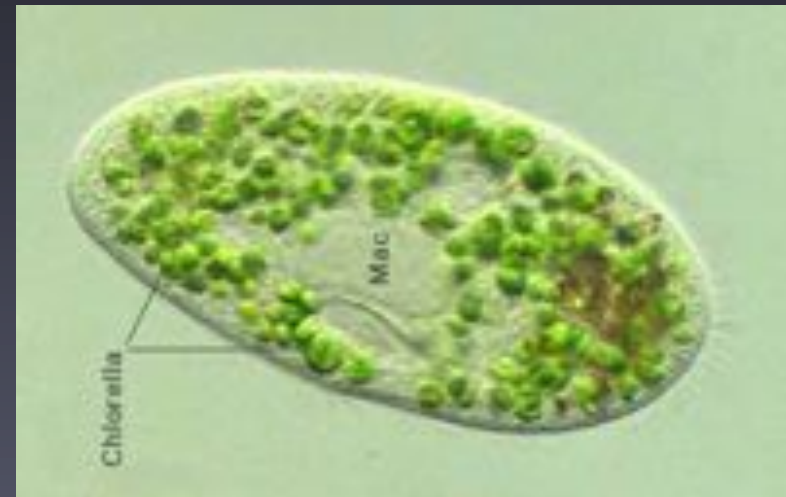
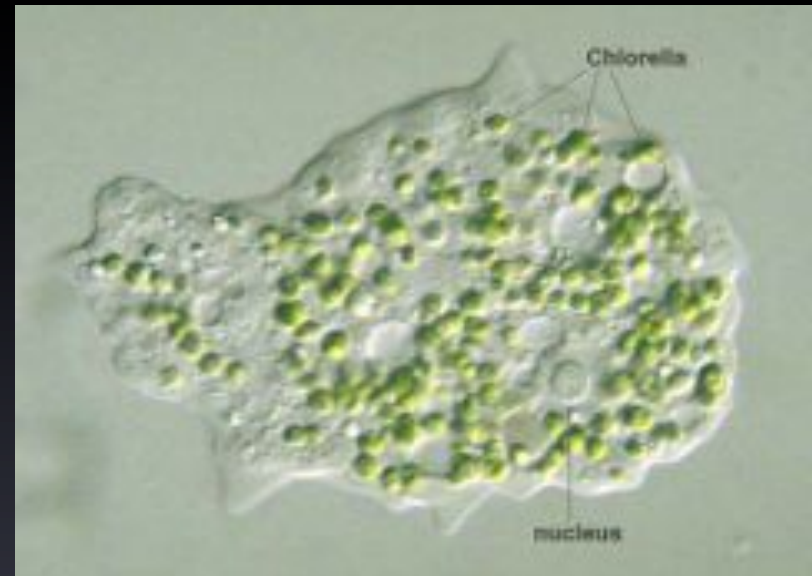
Source of fossil fuel and new biotechnology



## *Chlorella*

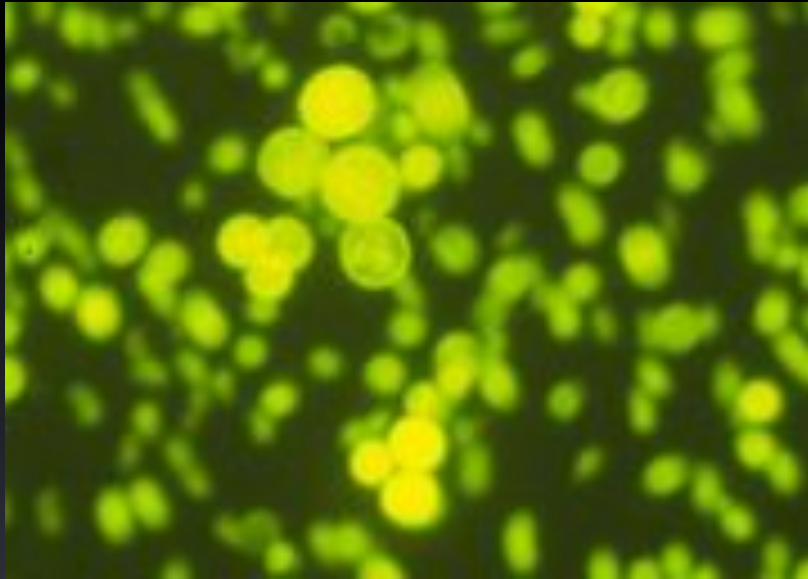
Aquatic, in soils or endosymbionts of freshwater invertebrates such as *Achantocystis*, *Paramecium* and *Hydra*

Famous alga used to discover the Calvin Cycle



*Acanthocystis* and other Protozoa with endosymbiont *Chlorella*

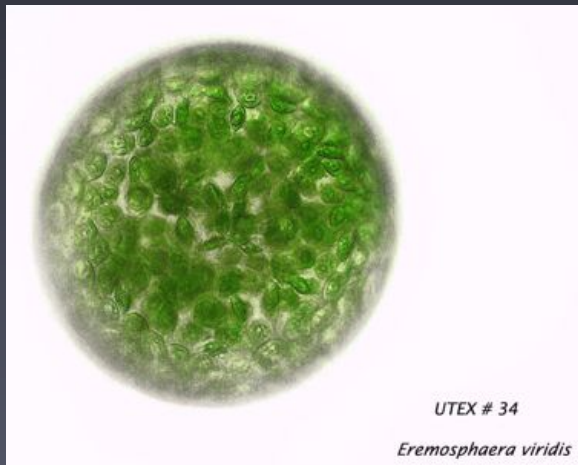




*Prototheca*



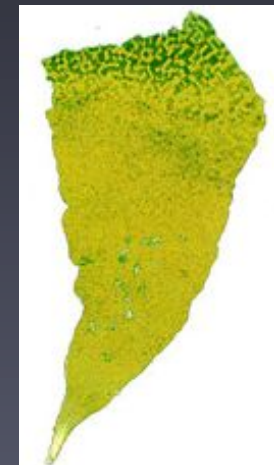
*Trebouxia*



*Eremosphaera*



*Microthamnion*



*Prasiola*